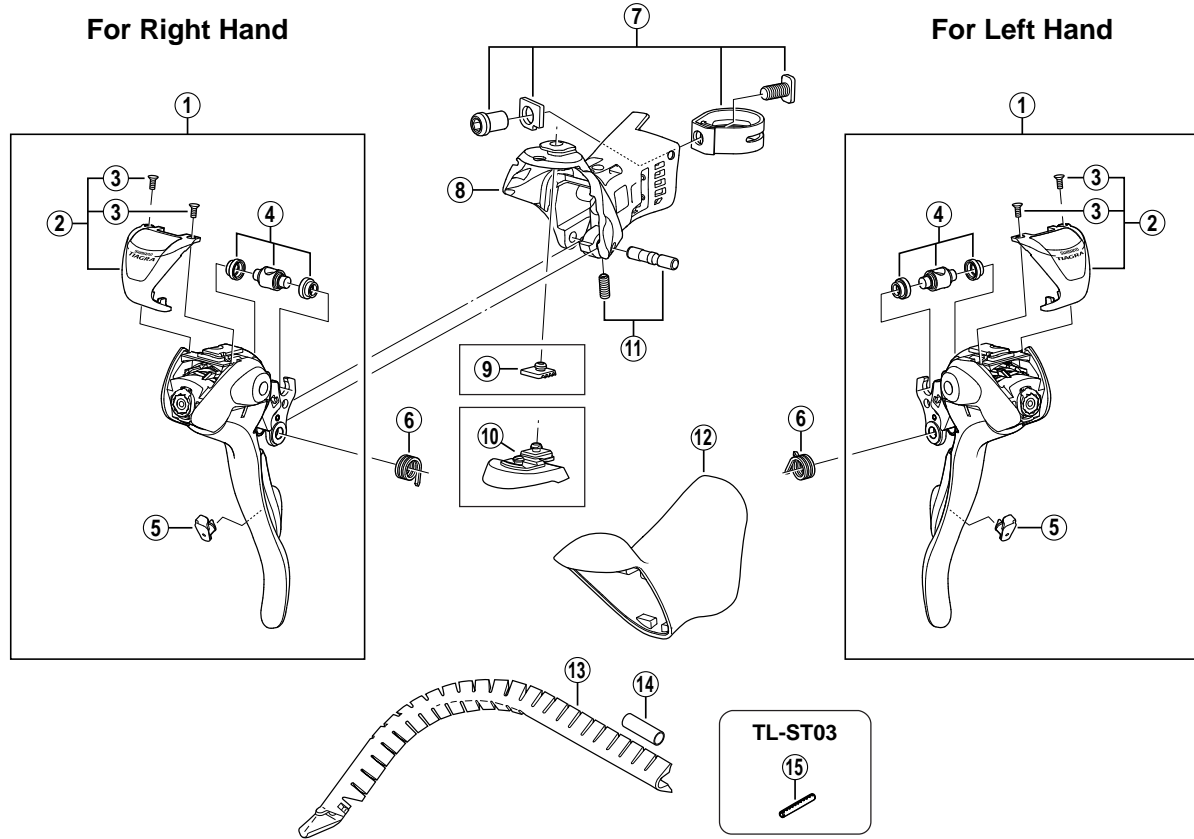


# TIAGRA Dual Control Lever ST-4500



ITEM NO.	SHIMANO CODE NO.	DESCRIPTION	INTERCHANGEABILITY	
			ST-5600	ST-6600
1	Y-6LP 98010	R.H. Main Lever Assembly		
	Y-6LP 98020	L.H. Main Lever Assembly		
2	Y-6LP 98030	R.H. Name Plate & Fixing Screw		
	Y-6LP 98040	L.H. Name Plate & Fixing Screw		
3	Y-66L 07010	Name Plate Fixing Screw		
4	Y-6CU98050	Cable Hook Unit		
5	Y-6KD05000	R.H. Release Lever Support	A	
	Y-6KD55000	L.H. Release Lever Support	A	
6	Y-6K2 87000	R.H. Return Spring		A
	Y-6K2 87100	L.H. Return Spring		A
7	Y-6K2 98060	Clamp Band Unit (φ 23.8 mm – φ 24.2 mm)		
8	Y-6LP 89000	R.H. Bracket		
	Y-6LP 89010	L.H. Bracket		
9	Y-6K2 50010	Bump Rubber		A
10	Y-6LP 87000	R.H. Adjustment Block (8°)		
	Y-6LP 87010	L.H. Adjustment Block (8°)		
	Y-6LP 86000	R.H. Adjustment Block (4°)		
	Y-6LP 86010	L.H. Adjustment Block (4°)		
11	Y-6KD98060	Lever Axle & Fixing Screw		
12	Y-6LP 98070	Bracket Covers (Pair)		
13	Y-86B 90010	Outer Cable Guide	A	A
14	Y-877 11000	Outer Cable Joint	A	A
15	Y-130 03200	Return Spring Installation Tool (TL-ST03)	A	A

A: Same parts.

B: Parts are usable, but differ in materials, appearance, finish, size, etc.

Absence of mark indicates non-interchangeability.

0710-2609A

Specifications are subject to change without notice.

# SHIMANO