

# SHIMANO

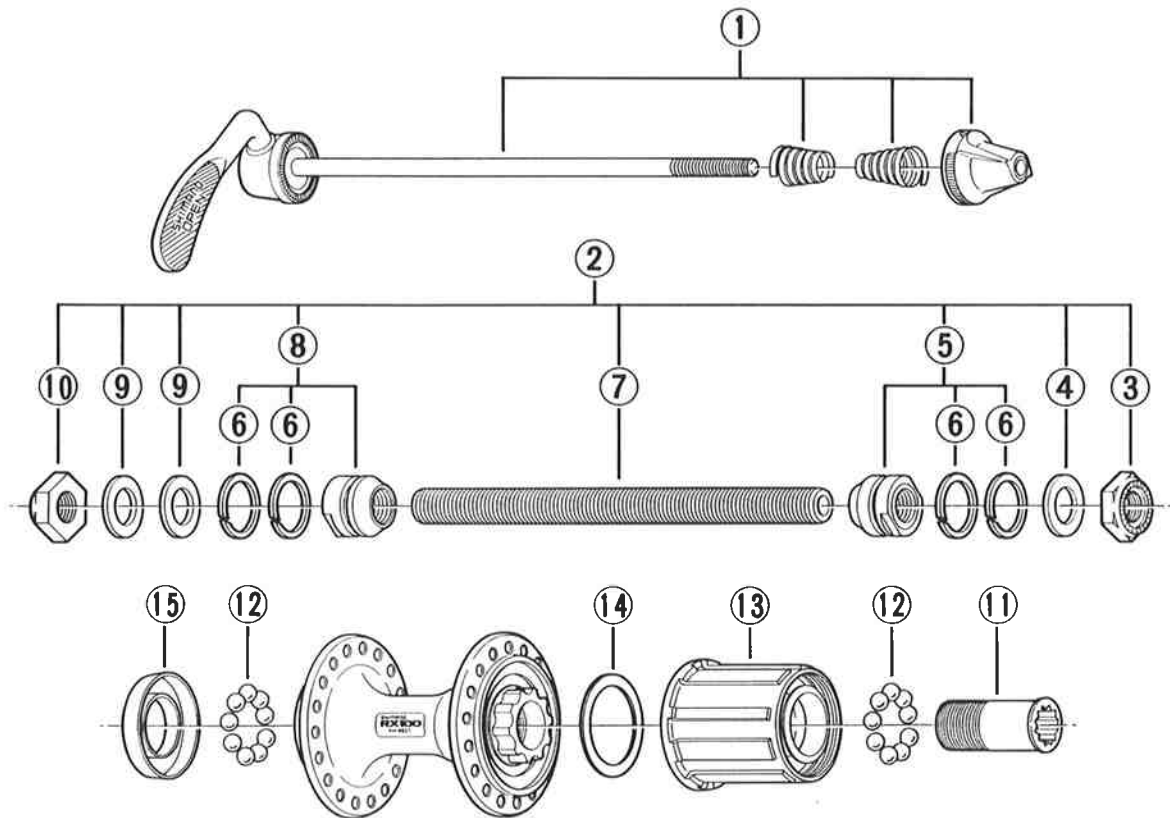
**SHIMANO (EUROPA) GmbH.**  
Kleinhülsen 1-3 4010 Hilden, Germany  
Tel. 02103-5005-0

**SHIMANO AMERICAN CORPORATION**  
One Shimano Drive, P.O. Box 19615, Irvine,  
California U.S.A. 92713-9615 Tel. (714) 951-5003

## Small parts list for after market.

- You may photocopy this sheet and use it as an order form.
- Sie können dieses Blatt kopieren und als Bestellformular verwenden.
- Vous pouvez photocopier cette feuille et l'utiliser comme bon de commande.
- Dit blad kan gecopieerd en als bestelformulier gebruikt worden.
- Potete fotocopiare questo foglio e usarlo come modulo di commissione.

### SHIMANO RX100 Freehub FH-A551-8 8-Speed



• Use with CS-HG70-8.

Over Lock Nut Dimension: 130mm(5-1/8")

Q'TY	ITEM NO.	PART NO.	DESCRIPTION
	1	381 9021-2	Complete Quick Release 161mm(6-11/32")
	2	30L 9801	Complete Hub Axle 141mm(5-9/16")
	3	220 0502-1	Right Hand Lock Nut 3.5mm
	4	301 0810	Right Hand Washer 1.2mm
	5	30G 9050	Right Hand Cone (M10 x 15mm) & Seal Ring
	6	299 0500	Seal Ring
	7	30K 0110	Hub Axle 141mm(5-9/16")
	8	220 9808	Left Hand Cone (M10 x 15.1mm) & Seal Ring
	9	301 0710	Left Hand Washer 1.5mm
	10	220 0501-1	Left Hand Lock Nut 4.5mm
	11	359 0400	Freewheel Body Fixing Bolt
	12	000 9131	Steel Ball (1/4") 18 pcs.
	13	30L 9802	Complete Freewheel Body w/Right Hand Dust Cap
	14	375 0400	Freewheel Body Washer
	15	248 0500	Left Hand Dust Cap