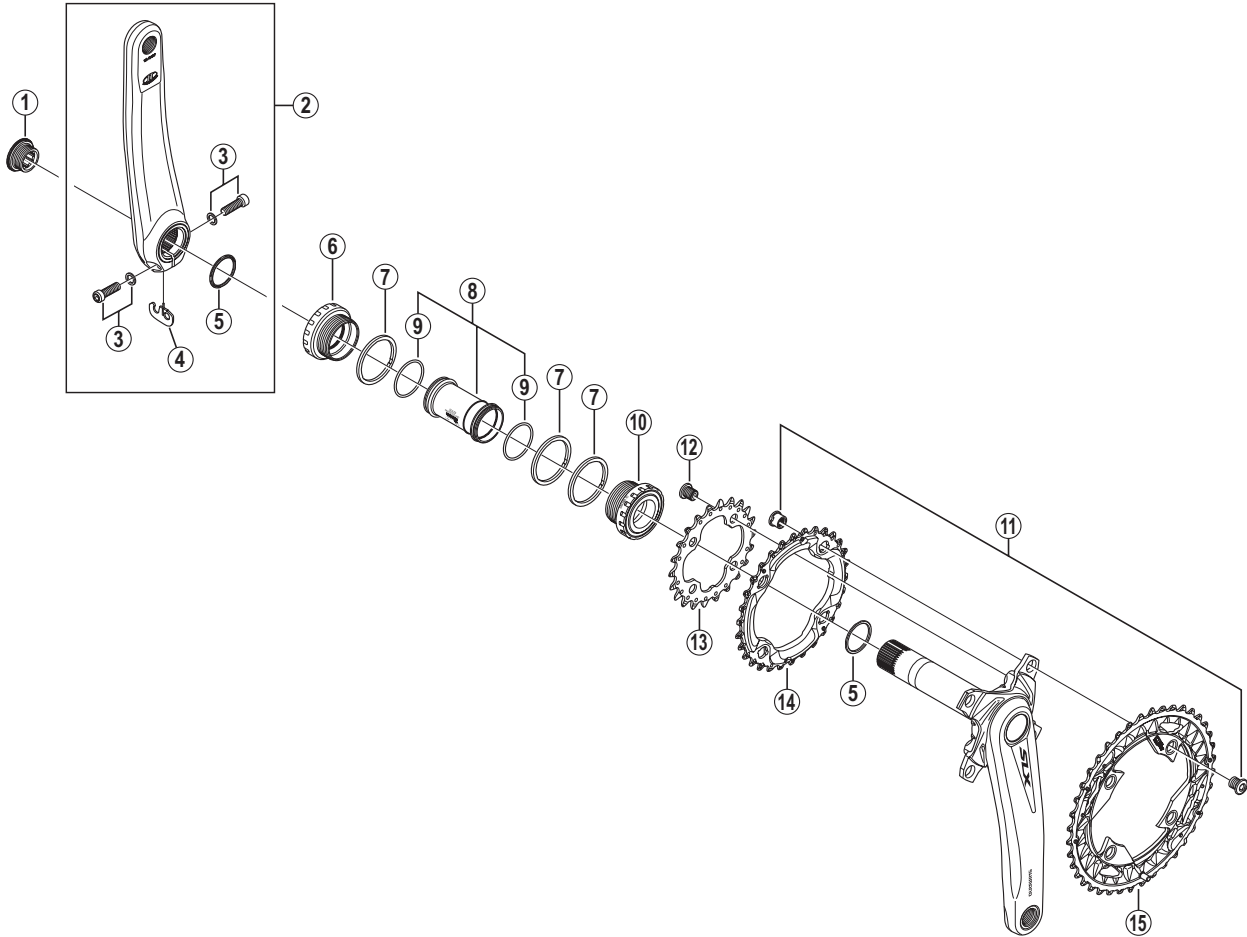


# SHIMANO SLX Front Chainwheel FC-M672



- Chainring teeth combinations: 40-30-22T
- Bolt circle diameter: 96 mm...(For outer gear and middle gear), 64 mm...(For inner gear)

FC-M672

ITEM NO.	SHIMANO CODE NO.	DESCRIPTION	INTERCHANGEABILITY
1	Y1F811100	Crank Arm Fixing Bolt	A
2	Y1N998010	Left Hand Crank Arm 170 mm	B
	Y1N998020	Left Hand Crank Arm 175 mm	B
3	Y1KS98030	Clamp Bolt (M6 x 19) & Washer	A
4	Y1FU98120	Plate	A
5	Y1F316000	Ring	A
6	Y1J198080	Left Hand Adapter (B.C.1.37" x 24T) English Thread (SM-BB70)	A
7	Y1F813000	Spacer (2.5 mm)	A
8	Y1E598210	Inner Cover & O-Ring	A
9	Y1TF21000	O-Ring	A
10	Y1J198090	Right Hand Adapter (B.C.1.37" x 24T) English Thread (SM-BB70)	A
11	Y1NW98030	Double Gear Fixing Bolt (M8 x 8.5) & Nut (4 sets)	
12	Y1NV98040	Inner Gear Fixing Bolt (M8 x 8.5 / 4 pcs.)	A
13	Y1NW22000	Chainring 22T-AN	B
14	Y1NW98010	Chainring 30T-AN	B
15	Y1NW98020	Chainring 40T-AN	

A: Same parts.

B: Parts are usable, but differ in materials, appearance, finish, size, etc.

Absence of mark indicates non-interchangeability.

Jul.-2013-3588  
© Shimano Inc. I

Specifications are subject to change without notice.

# SHIMANO