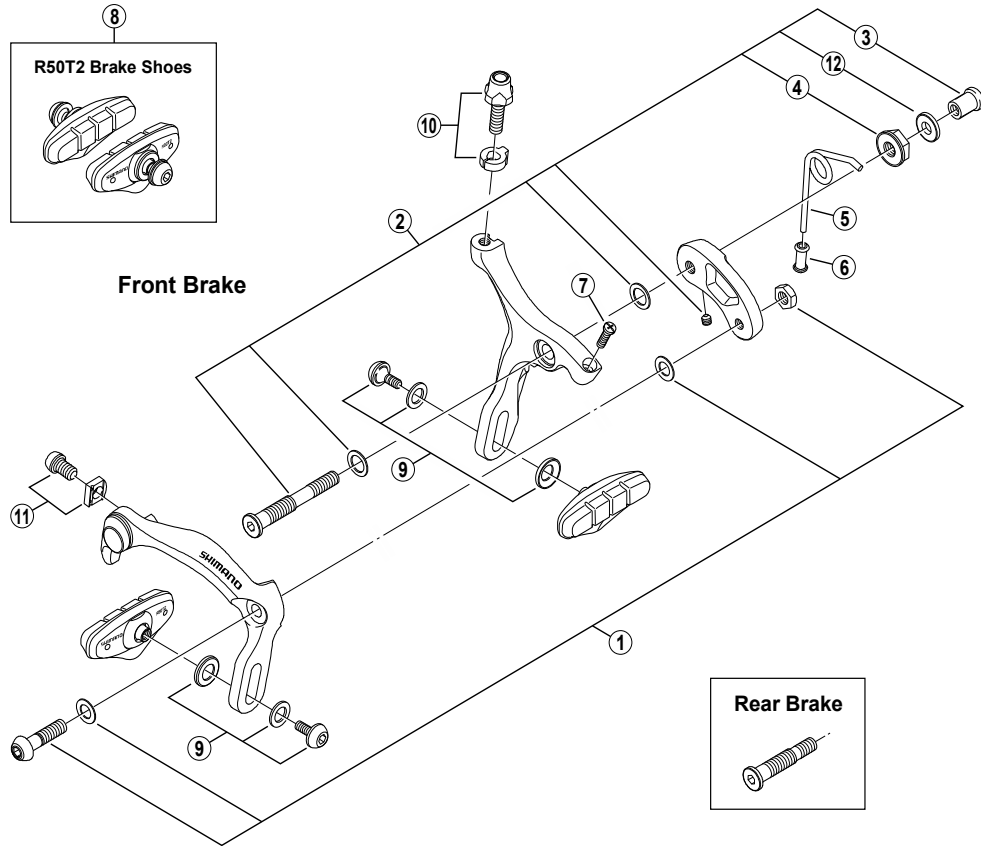


Caliper Brake
BR-R451-S Silver Version
BR-R451-L Black Version



ITEM NO.	SHIMANO CODE NO.	DESCRIPTION	INTERCHANGEABILITY	
			BR-R450	BR-R650
1	Y8KM98010	Arm Bolt Unit (M6 x 23.5)	A	A
2	Y8KM98020	Front Pivot Bolt Assembly {Pivot Bolt: 51.4 mm (2") / Pivot Nut: 10.5 mm}	A	A
	Y8KM98030	Front Pivot Bolt Assembly {Pivot Bolt: 51.4 mm (2") / Pivot Nut: 12.5 mm}	A	A
	Y8KM98040	Front Pivot Bolt Assembly {Pivot Bolt: 51.4 mm (2") / Pivot Nut: 18.0 mm}	A	A
	Y8KM98050	Front Pivot Bolt Assembly {Pivot Bolt: 51.4 mm (2") / Pivot Nut: 27.0 mm}	A	A
	Y8KM98060	Rear Pivot Bolt Assembly {Pivot Bolt: 36.7 mm (1-7/16") / Pivot Nut: 10.5 mm}	A	A
*	Y85575110	Pivot Nut (10.5 mm) for Front/Rear	A	B
* 3	Y85575020	Pivot Nut (12.5 mm) for Front	A	B
	Y85574010	Pivot Nut (18.0 mm) for Front	A	B
	Y8A023000	Pivot Nut (27.0 mm) for Front	A	B
4	Y8E604000	Lock Nut	B	B
5	Y81U09200	Arm Spring	A	A
6	Y8BY08000	Spring Guide	A	
7	Y81U10100	EC-Screw (M4 x 12.5)	A	B
* 8	Y8JY98070	R50T2 Brake Shoe Set (5 pairs)	A	
9	Y8E698030	Shoe Fixing Bolt Unit (M5 x 11.2)	A	
10	Y8BY98040	Cable Adjusting Bolt (M6 x 19.3) & Clip	A	
11	Y8BT98010	Cable Fixing Bolt (M6 x 9) & Plate	A	
* 12	Y85850120	Washer D6		

A: Same parts.

B: Parts are usable, but differ in materials, appearance, finish, size, etc.

Absence of mark indicates non-interchangeability.

Specifications are subject to change without notice.

May-2016-3232A

© Shimano Inc. I

SHIMANO