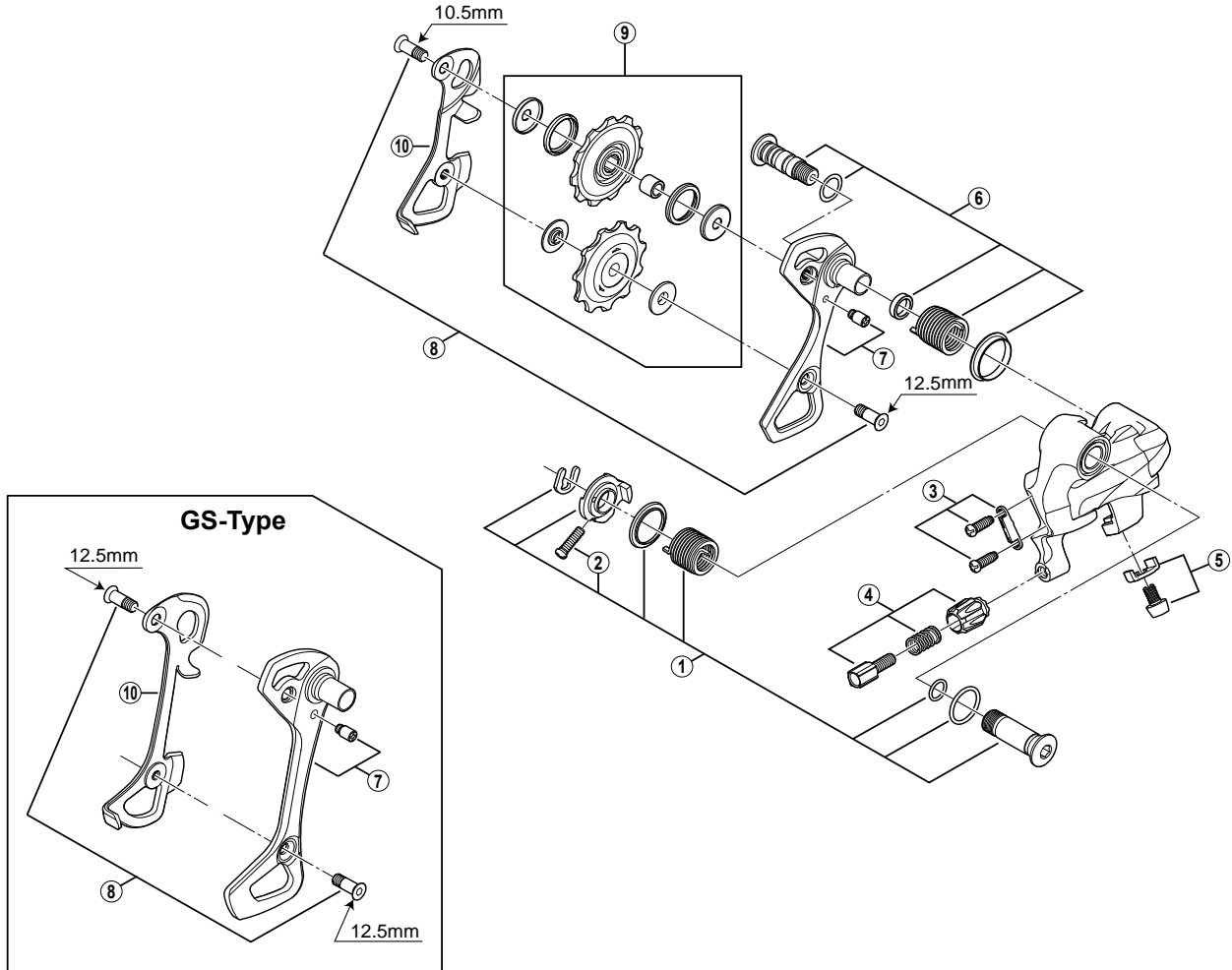


ULTEGRA Rear Derailleur (10-speed)

RD-6700-A (SS/GS) Silver Version

RD-6700-A-G (SS/GS) Glossy Grey Version



ITEM NO.	SHIMANO CODE NO.	DESCRIPTION	RD-7900		RD-5701	
			INTERCHANGE-ABILITY			
1	Y5X998010	B-Axle Assembly	A	B		
2	Y55625080	B-Tension Adjusting Screw (M4 x 13.5)	A	B		
3	Y5X998020	Stroke Adjusting Screws (M4 x 11.5) & Plate	A	A		
4	Y5X098030	Cable Adjusting Bolt Unit	A	A		
5	Y5W598030	Cable Fixing Bolt (M5 x 8) & Plate	A	A		
6	Y5X098050	Plate Axle Assembly	A			
7	Y5X998100	Outer Plate & Plate Stopper Pin (SS-type)	A			
	Y5X998110	Outer Plate & Plate Stopper Pin (GS-type)				
8	Y5X998070	Pulley Bolt 10.5 mm & 12.5 mm for SS-type				
	Y5V598140	Pulley Bolt 12.5 mm (2 pcs.) for GS-type			A	
* 9	Y5X998150	Tension & Guide Pulley Set	B	B		
10	Y5XH08000	Inner Plate (SS-type)			A	
	Y5VG09300	Inner Plate (GS-type)				

A: Same parts.

B: Parts are usable, but differ in materials, appearance, finish, size, etc.

Absence of mark indicates non-interchangeability.

Specifications are subject to change without notice.

Aug.-2015-3309A

© Shimano Inc. I

SHIMANO