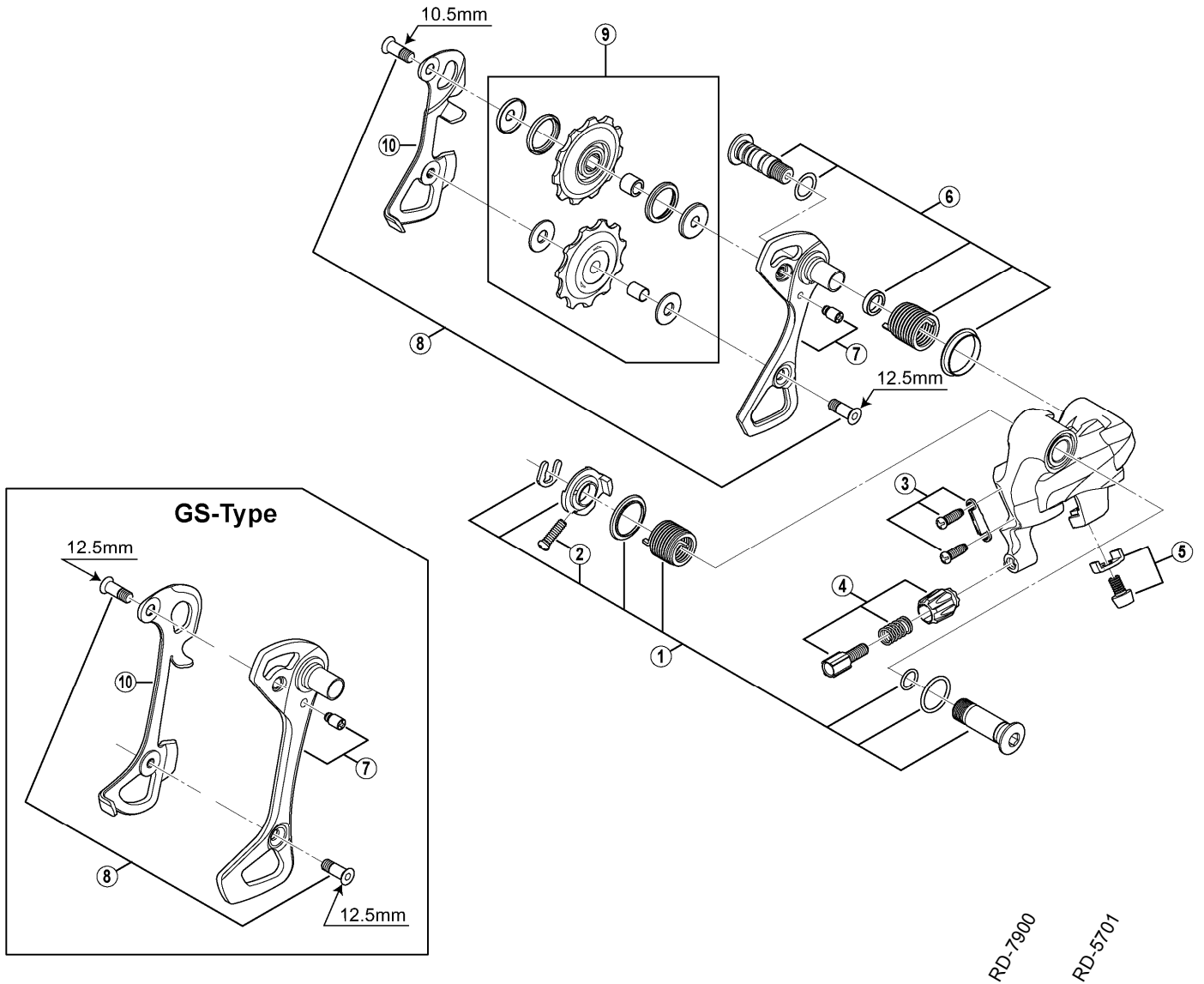


ULTEGRA Rear Derailleur (10-speed)

RD-6700-A (SS/GS) Silver Version (Short Cage/Long Cage)

RD-6700-A-G (SS/GS) Glossy Grey Version (Short Cage/Long Cage)



ITEM NO.	SHIMANO CODE NO.	DESCRIPTION	INTERCHANGEABILITY		
			A	B	
1	Y5X998010	B-Axle Assembly	A	B	
2	Y55625080	B-Tension Adjusting Screw (M4 x 13.5)	A	B	
3	Y5X998020	Stroke Adjusting Screws (M4 x 11.5) & Plate	A	A	
4	Y5X098030	Cable Adjusting Bolt Unit	A	A	
5	Y5W598030	Cable Fixing Bolt (M5 x 8) & Plate	A	A	
6	Y5X098050	Plate Axle Assembly	A		
7	Y5X998100	Outer Plate & Plate Stopper Pin (SS-type)	A		
	Y5X998110	Outer Plate & Plate Stopper Pin (GS-type)			
8	Y5X998070	Pulley Bolt 10.5mm & 12.5mm for SS-type			
	Y5V598140	Pulley Bolt 12.5mm (2 pcs.) for GS-type		A	
9	Y5X998080	Tension & Guide Pulley Set	B	B	
10	Y5XH08000	Inner Plate (SS-type)		A	
	Y5VG09300	Inner Plate (GS-type)			

A: Same parts.

B: Parts are usable, but differ in materials, appearance, finish, size, etc.

Absence of mark indicates non-interchangeability.

Apr.-2012-3309

© Shimano Inc. A

Specifications are subject to change without notice.

SHIMANO