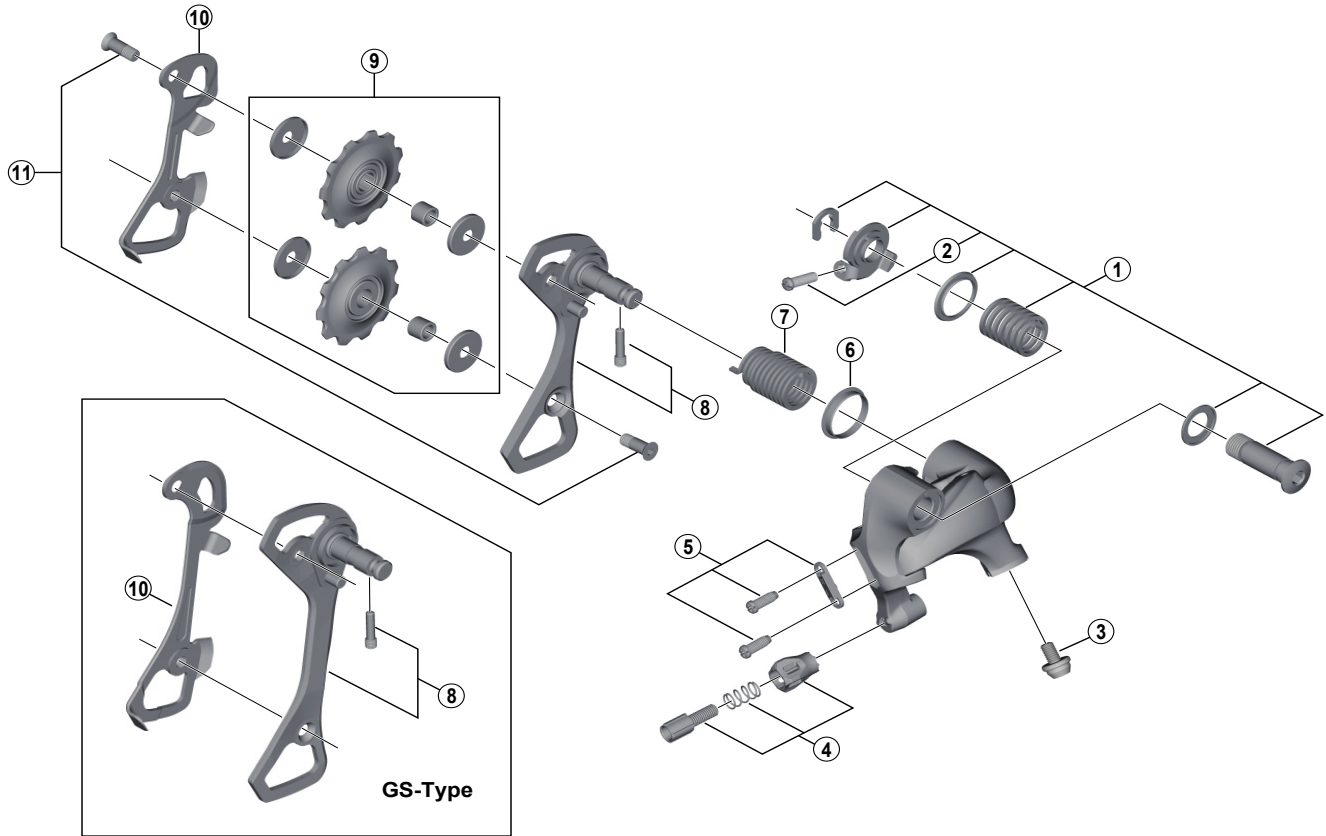


TIAGRA Rear Derailleur
RD-4700-SS / GS (10-speed)



ITEM NO.	SHIMANO CODE NO.	DESCRIPTION	INTERCHANGEABILITY			
			RD-5800-SS	RD-5800-GS	RD-4700-SS	RD-4700-GS
1	Y5YE98010	B-Axle Assembly			A	A
2	Y5YE18000	B-Tension Adjusting Screw (M4 x 13.5)	A	A	A	A
3	Y5RF98010	Cable Fixing Bolt w/Plate	A	A	A	A
4	Y5RF98020	Cable Adjusting Bolt Unit			A	A
5	Y5YC98040	Stroke Adjusting Screws (M4 x 11.5) & Plate	A	A	A	A
6	Y5UC14000	P-Seal Ring	A	A	A	A
7	Y5XV17000	P-Tension Spring			A	A
8	Y5RF98030	Outer Plate & Plate Stopper Pin for SS-Type			A	
	Y5RF98040	Outer Plate & Plate Stopper Pin for GS-Type				A
9	Y5RF98070	Tension & Guide Pulley Set			A	A
	Y5RF06000	Inner Plate for SS-Type			A	
10	Y5RF36000	Inner Plate for GS-Type				A
	Y5V598140	Pulley Bolt 12.5 mm (2 pcs.)	A	A	A	A

A: Same parts.

B: Parts are usable, but differ in materials, appearance, finish, size, etc.

Absence of mark indicates non-interchangeability.

Specifications are subject to change without notice.

Jun.-2017-3889B

© Shimano Inc. I

SHIMANO