

SHIMANO SLX Front Disc Brake

BR-M675 Brake Caliper

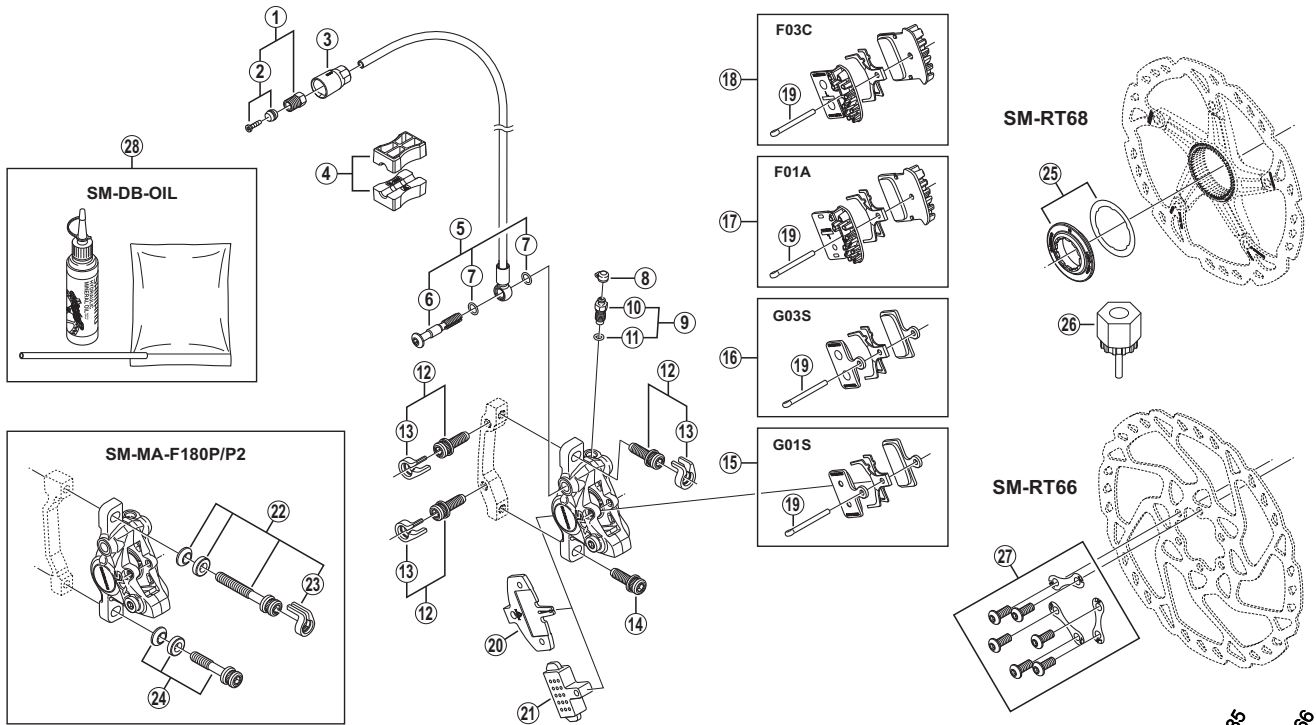
SM-BH90-SB Brake Hose

SM-RT68 Disc Rotor/Center Lock

SM-RT66 Disc Rotor/6-Bolt

Disc Rotor/Center Lock

Disc Rotor/6-Bolt



BR-M785
BR-M686

ITEM NO.	SHIMANO CODE NO.	DESCRIPTION	INTERCHANGEABILITY
1	Y8JA98010	Connecting Bolt Unit	A A
2	Y8JA98020	Olive & Connector Insert	A A
3	Y8JA07000	Cover	A A
4	Y8H198030	TL-BH61 Shimano original tool (2 pcs.)	A A
5	Y8JA98030	Banjo Bolt & O-Ring	A A
6	Y8JA04000	Banjo Bolt	A A
7	Y8SY28000	O-Ring	A A
8	Y8B214000	Bleed Nipple Cap	A A
9	Y8CL98050	Bleed Nipple & Seal Ring	A A
10	Y8CL24000	Bleed Nipple	A A
11	Y8B511001	O-Ring for Bleed Nipple	A A
12	Y8DS98010	Adapter Fixing Bolt (M6 x 18.7) & Stop Ring	A A
13	Y8C511000	Snap Ring	A A
14	Y8C509020	Adapter Fixing Bolt (M6 x 18.7)	A A
15	Y8KA98010	Resin Pad (G01S) & Spring w/Split Pin	B A
16	Y8JZ98020	Metal Pad (G03S) & Spring w/Split Pin	A A
17	Y8J79801A	Resin Pad (F01A) w/Fin & Spring w/Split Pin	A A
18	Y8J79802A	Metal Pad (F03C) w/Fin & Spring w/Split Pin	A A
19	Y8DB06100	Split Pin	A
20	Y8J709000	Pad Spacer	A A
21	Y8J712000	Bleeding Spacer	A A
22	Y8G498020	Caliper Fixing Bolt Unit (M6 x 37.9)	A A
23	Y81703000	Snap Ring	A A
24	Y8G498030	Caliper Fixing Bolt Unit (M6 x 32.1)	A A
25	Y8K998010	Lock Ring & Washer (Standard)	B A
	Y8K198010	Lock Ring & Washer (Option)	A B
26	Y12009230	TL-LR15 Lock Ring Removal Tool	A A
27	Y8KT98010	Rotor Fixing Bolt & Lock Washer	B B
28	Y83998010	Mineral Oil Bleed Kit (50 ml)	A A

A: Same parts.

B: Parts are usable, but differ in materials, appearance, finish, size, etc.

Absence of mark indicates non-interchangeability.

Jan.-2015-3395A
© Shimano Inc. I

Specifications are subject to change without notice.

SHIMANO